

## Recommended Lipsticks for Skin Tones

Ivory 1, 2, 3, 4, 6 TimeWise Liquid Foundations; Ivory 100, 104, 105 Medium Coverage;  
Ivory .5 and Ivory 1 Mineral Powder Foundation



Pink Satin



Sunny Citrus\*



Sunset



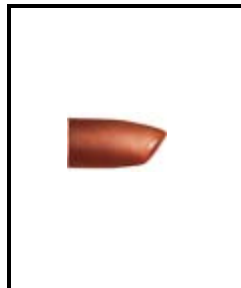
Hibiscus



Red



Shell\*



Toffee



Pink Passion



Apricot Glaze



Dusty Rose



Icy Peach\*



Frosted Rose



Whipped Berries



Berry Kiss



Sweet Nectar



Black Cherry



Apple Berry



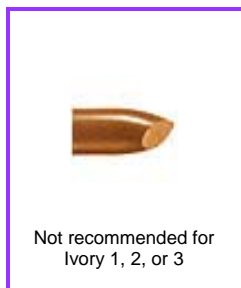
Boysenberry



Sheer Blush



Pink Shimmer



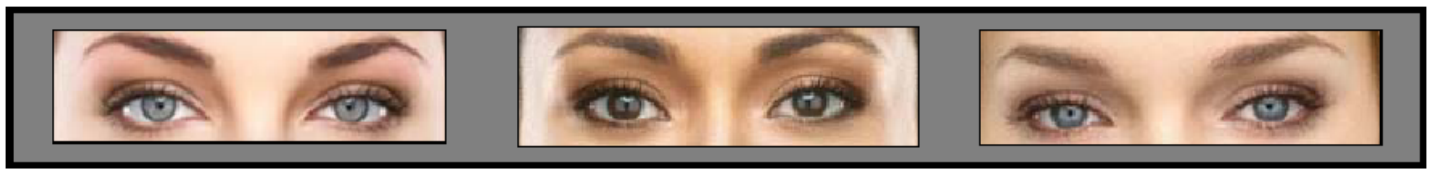
Not recommended for  
Ivory 1, 2, or 3

Sunlit Sand

### Lipstick Intensity

- Bright
- Deep
- Neutral
- Layering

\* Shades without shimmer or pearl



## Recommended Lipsticks for Skin Tones

Ivory 5, 7 and Beige 5 TimeWise Liquid Foundations; Ivory 200, 204, 205 Medium Coverage;  
Ivory 2 Mineral Powder Foundation



Pink Satin



Sunny Citrus\*



Sunset



Hibiscus



Red



Apricot Glaze



Icy Peach\*



Pink Passion



Sweet Nectar



Dusty Rose

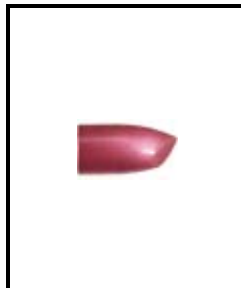


Not recommended for Ivory 7

Raisinberry



Frosted Rose



Whipped Berries



Shell\*



Whisper\*



Toffee



Apple Berry



Berry Kiss



Boysenberry



Not recommended for Ivory 7

Blaze\*



Black Cherry



Pink Shimmer



Sunlit Sand

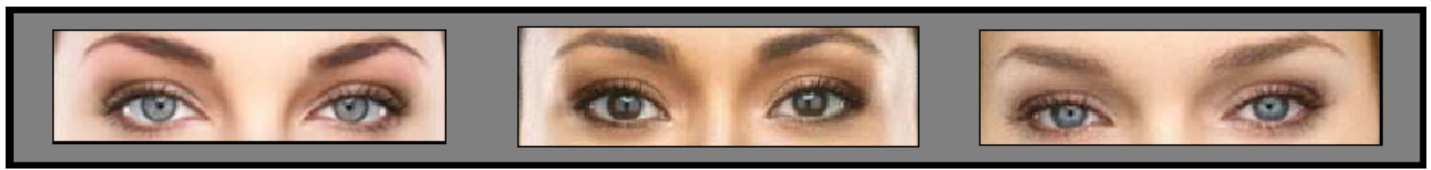


Sheer Blush

### Lipstick Intensity

- Bright
- Deep
- Neutral
- Layering

\* Shades without shimmer or pearl



## Recommended Lipsticks for Skin Tones

Beige 1, 3, 6 TimeWise Liquid Foundations; Ivory 300, 304, 305 Medium Coverage;  
Ivory 2, Beige .5 and Beige 1 Mineral Powder Foundation



Pink Satin



Sunny Citrus\*



Sunset



Hibiscus



Red



Shell\*



Icy Peach\*



Pink Passion



Sweet Nectar



Dusty Rose



Apricot Glaze



Frosted Rose



Whipped Berries



Not recommended for  
Beige 305.

Whisper\*



Berry Kiss



Toffee



Raisinberry



Apple Berry



Boysenberry



Recommended only for  
Beige 6.

Midnight Red\*



Black Cherry



Not recommended for  
Beige 3.

Blaze\*



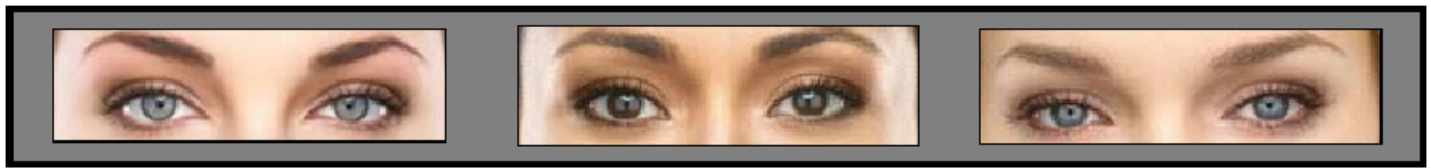
Sunlit Sand



Sheer Blush



Pink Shimmer



## Recommended Lipsticks for Skin Tones

Beige 2, 4, 7, 8 TimeWise Liquid Foundations; Bronze 400, 402, 404 Medium Coverage;

Beige .5, 1, 1.5, 2 Mineral Powder Foundation



Pink Satin



Sunny Citrus\*



Sunset



Hibiscus



Red



Apricot Glaze



Raisinberry



Pink Passion



Whisper\*



Dusty Rose



Shell\*



Frosted Rose



Whipped Berries



Icy Peach\*



Sweet Nectar



Toffee



Blaze\*



Black Cherry



Berry Kiss



Apple Berry



Boysenberry



Pink Shimmer



Sunlit Sand



Sheer Blush



Mocha Freeze

Copper Star, a neutral color, and Amber Glow, a layering shade, are only recommended for Beige 2 and 7.  
Merlot, Gingerbread, Amber Suede, Maple, and Midnight Red, all deep colors, are recommended only for Beige 7.



# Recommended Lipsticks for Skin Tones

Bronze 1, 2, 3, 4 TimeWise Liquid Foundations; Bronze 500, 504, 507 Medium Coverage;  
Bronze 1, 2, 3 Mineral Powder Foundation



Sunny Citrus\*



Sunset



Hibiscus



Red



Not recommended for  
Bronze 3 or 4.

Icy Peach



Not recommended for  
Bronze 3 or 4.

Whisper\*



Not recommended for  
Bronze 3 or 4.

Toffee



Not recommended for  
Bronze 3 or 4.

Pink Passion



Raisinberry



Copper Star



Gingerbread



Maple\*



Whipped Berries



Berry Kiss\*



Downtown Brown



Bronzed



Nutmeg



Apple Berry



Amber Suede



Blaze\*



Midnight Red\*



Boysenberry



Black Cherry



Hot Mocha\*



Sweet Nectar

Amber Glow, Sunlit Sand, and Mocha Freeze, all layering shades, are also recommended for all skin tones.



# Recommended Lipsticks for Skin Tones

Bronze 5, 6, 7, 8 TimeWise Liquid Foundations; Bronze 600, 607, 708, 808 Medium Coverage;  
Bronze 3, 4, 5 Mineral Powder Foundation



Sunny Citrus\*



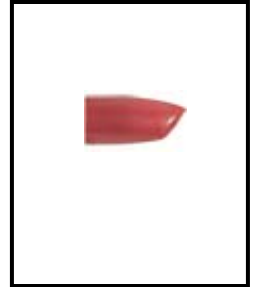
Hibiscus



Red



Whipped Berries



Gingerbread



Downtown Brown



Hot Mocha\*



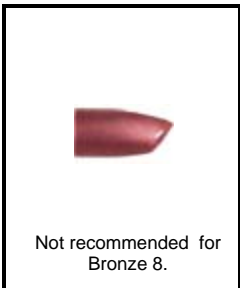
Bronzed



Nutmeg



Copper Star



Raisinberry



Maple\*



Rich Fig



Berry Kiss



Apple Berry



Black Cherry



Boysenberry



Blaze\*



Amber Suede



Midnight Red\*

## Lipstick Intensity

- Bright
- Deep
- Neutral
- Layering



Mocha Freeze

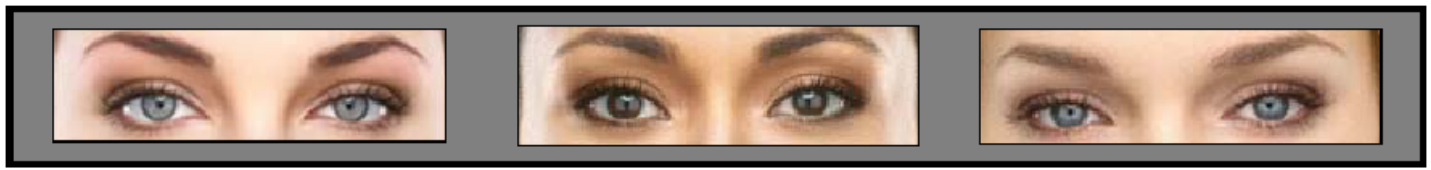


Amber Glow



Sunlit Sand

\* Shades without shimmer or pearl



## Mary Kay NouriShine Lip Gloss



**Au Naturel**



**Beach Bronze**



**Berry Tart**



**Café au Lait**



**Cream and Sugar**



**Fancy Nancy**



**Mango Tango**



**Icicle**



**Pink Luster**



**Pink Parfait**



**Pink Sateen**



**Red Passion**

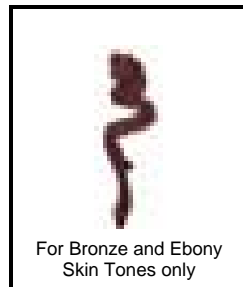


**Rich Spice**

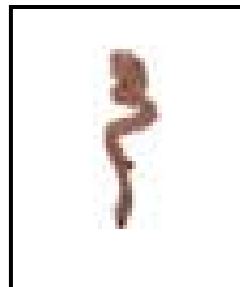


**Rock 'n' Red**

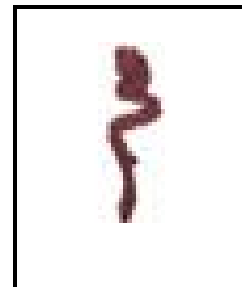
### Lip Liners



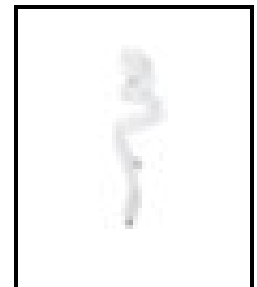
**Cappuccino**



**Caramel**



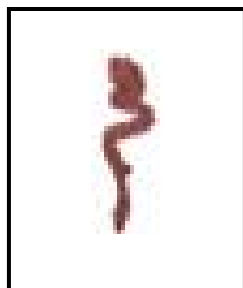
**Chocolate**



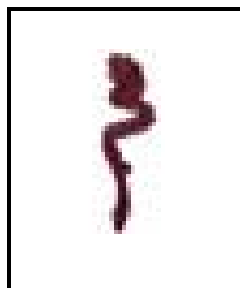
**Clear**



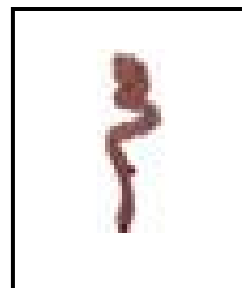
**Dark Chocolate**



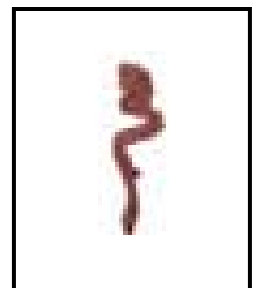
**Neutral**



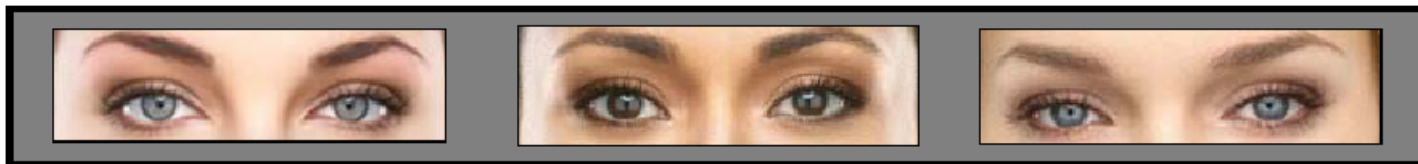
**Plum**



**Soft Blush**



**Spiced Tea**



## Mary Kay Tinted Lip Balm SPF 15



Rose\*



Poppy\*



Natural\*



Apricot\*



Blush\*

\* Shades without shimmer or pearl

## Mary Kay Liquid Lip Color



Cherry Coffee



Chocoholic



Malted



Raspberry Ice



Sherbet



Royal Plum