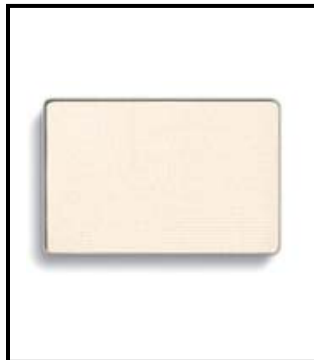


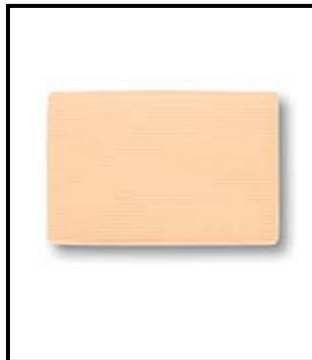
HIGHLIGHTERS Ivory/Beige (Use under the brow bone and on the inside half of the lid)



White Lily †



Crystalline *



Sweet Cream †



Moonstone *



Spun Silk *



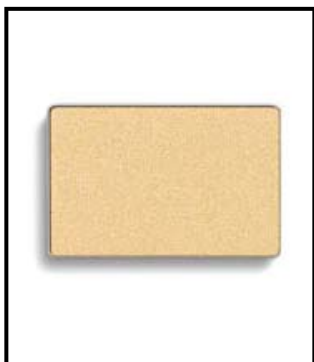
Honey Spice *



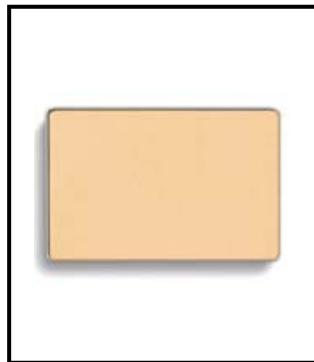
Lime *



Sterling *



Gold Coast *



Golden Vanilla †
Recommended only for
Beige Skin Tone

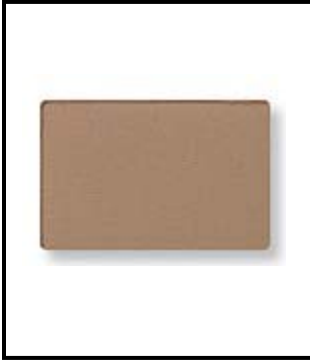
† Matte

* Shimmer

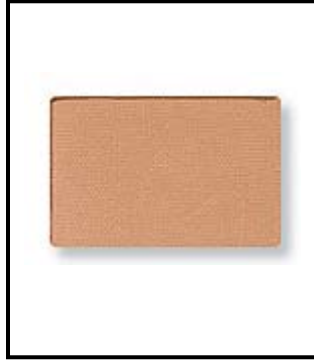


BLUE EYES

MIDTONES Ivory/Beige (Used over the outer half of the lid and in the crease)



Hazelnut †



Silky Caramel †



Precious Pink *



Sienna †
Used as a beige midtone, but ivory accent.



Almond †
Used as a beige midtone, but ivory accent.

ACCENT COLORS Ivory/Beige Recommended Shades



Amber Blaze *



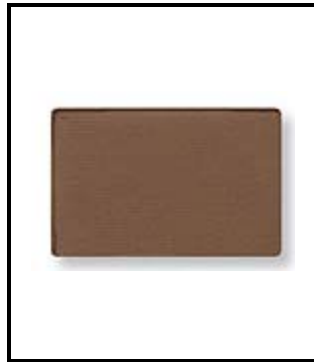
Copper Glow *



Chocolate Kiss *



Black Pearl *



Cinnabar †



Sweet Plum *



Espresso †



Coal †



Truffle *

Recommended Eye Liners



Bronze



Deep Brown



Black

† Matte

* Shimmer

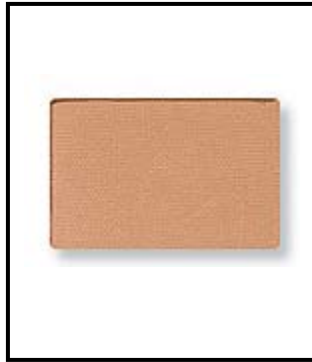


GREEN or HAZEL EYES

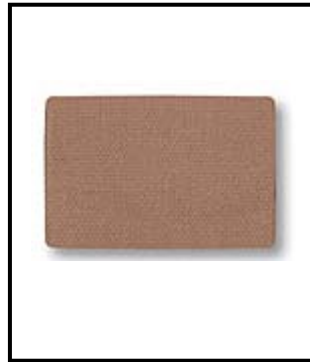
MIDTONES Ivory/Beige (Used over the outer half of the lid and in the crease)



Hazelnut †



Silky Caramel †



Sienna †

Used as a beige midtone, but ivory accent.



Almond †

Used as a beige midtone, but ivory accent.

ACCENT COLORS Ivory/Beige Recommended Shades



Amber Blaze *



Copper Glow *



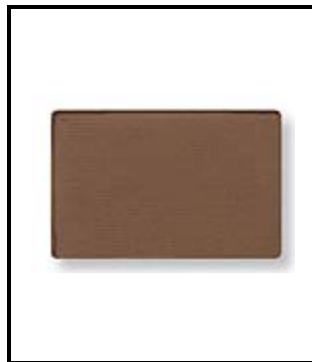
Iris *



Chocolate Kiss *



Black Pearl *



Cinnabar †



Sweet Plum *



Espresso †



Coal †



Granite *



Truffle *

Recommended Eye Liners



Violet Ink



Black



Bronze

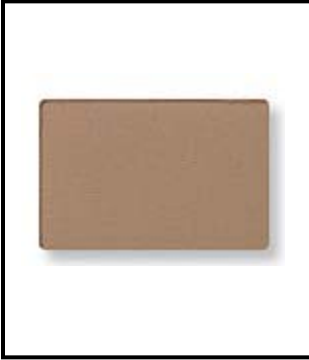


Deep Brown

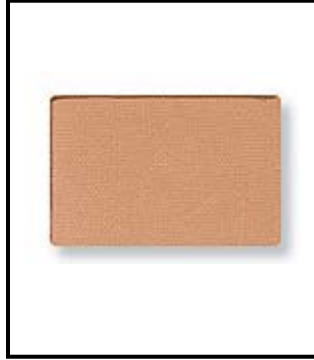


BROWN EYES

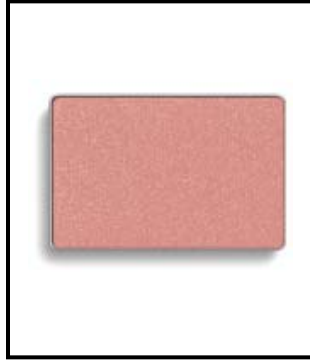
MIDTONES Ivory/Beige (Used over the outer half of the lid and in the crease)



Hazelnut †



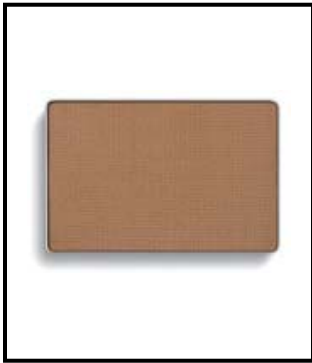
Silky Caramel †



Precious Pink *



Sienna †
Used as a beige midtone, but ivory accent.



Almond †
Used as a beige midtone, but ivory accent.

ACCENT COLORS Ivory/Beige Recommended Shades



Amber Blaze *



Copper Glow *



Chocolate Kiss *



Iris *



Cinnabar †



Sweet Plum *



Espresso †



BROWN EYES

ACCENT COLORS Ivory/Beige Recommended Shades



Azure *



Peacock Blue *



Midnight Star *



Emerald *



Truffle *



Polished Stone *



Granite *



Silver Satin *



Black Pearl *



Coal †

Recommended Eye Liners



Bronze



Deep Brown



Violet Ink



Black



Dark Denim



Rich Jade



Steely

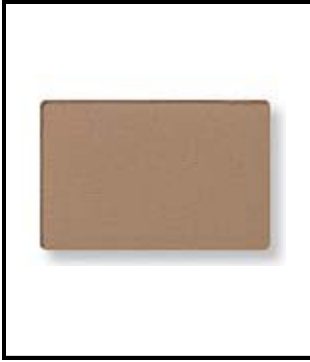
† Matte

* Shimmer



GRAY EYES

MIDTONES Ivory/Beige (Used over the outer half of the lid and in the crease)



Hazelnut †



Almond †



Sienna †

Used as a beige midtone, but ivory accent.

ACCENT COLORS Ivory/Beige Recommended Shades



Granite *



Silver Satin *



Black Pearl *



Sweet Plum *



Espresso †



Coal †

Recommended Eye Liners



Steely



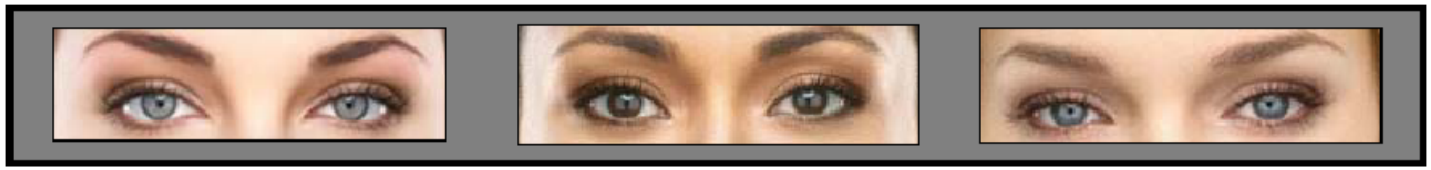
Deep Brown



Black

† Matte

* Shimmer



HIGHLIGHTERS Bronze/Ebony (Use under the brow bone and on the inside half of the lid)



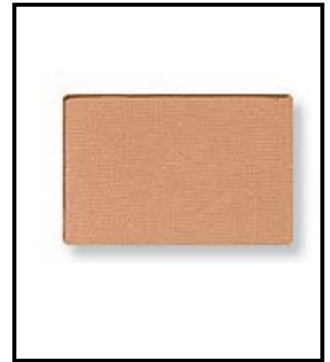
Honey Spice *



Spun Silk *
Recommended only for
Bronze Skin; not Ebony.



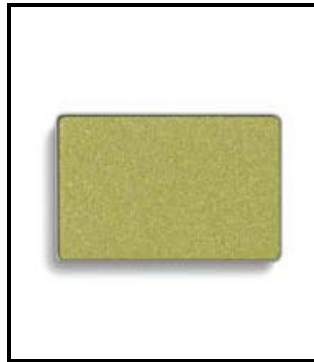
Precious Pink *



Silky Caramel †



Amber Blaze *



Lime *



Azure *



Polished Stone *



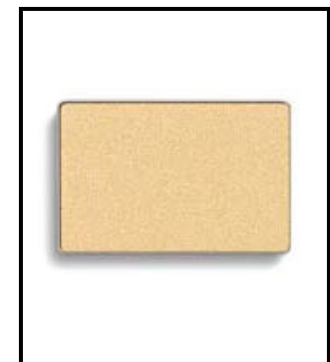
Silver Satin *
Recommended only for
Bronze Skin; not Ebony.



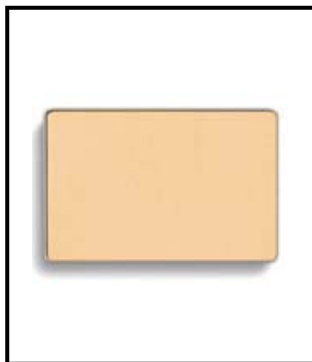
Emerald *



Copper Glow *
Recommended only for Ebony
Skin; not Bronze.



Gold Coast *



Golden Vanilla †

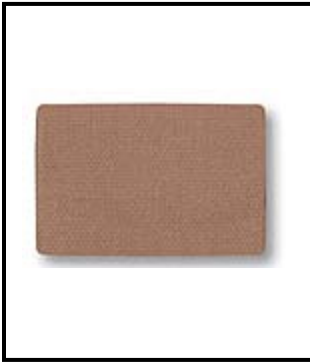
† Matte

* Shimmer

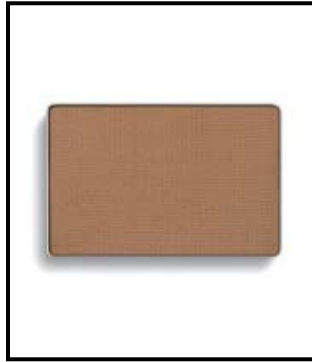


BRONZE/EBONY EYE SHADOW

MIDTONES (Used over the outer half of the lid and in the crease)



Sienna †



Almond †



Cinnabar †

Recommended for Ebony as highlight; Bronze as accent.

ACCENT COLORS Recommended Shades



Copper Glow *

Recommended for Bronze skin.



Chocolate Kiss *



Peacock Blue *



Truffle *



Ivy Garden *



Iris *



Sweet Plum *



Midnight Star *



Black Pearl *



Espresso †



Coal †

**Recommended Eye Liners—
All eight colors**

† Matte

* Shimmer